

Sliding Door Refrigerator (4-door type)



**GOOD DESIGN
AWARD 2024**

Sliding door (4-door type) is adopted of **the industry's first***!

Effective use of working space without obstructing the work flow line!

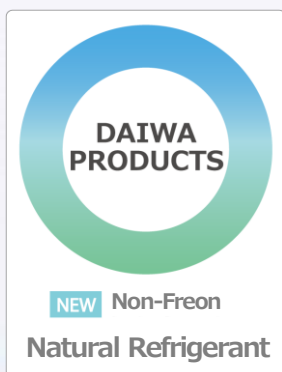
※As of February, 2025

Please watch the video of sliding door refrigerator (4-door type) ▶



It is adopting natural refrigerant (R600a), which is Low GWP and Eco-Friendly.

- Natural Refrigerant refer to substances that exit naturally in the environment and it's eco-friendly refrigerants.



	Natural Refrigerant R600a	Conventional Refrigerant R134a
Ozone Depletion Potential (ODP)	0	0
Global Warming Potential (GWP*) [Case of letting CO ₂ to be 1]	3	1430

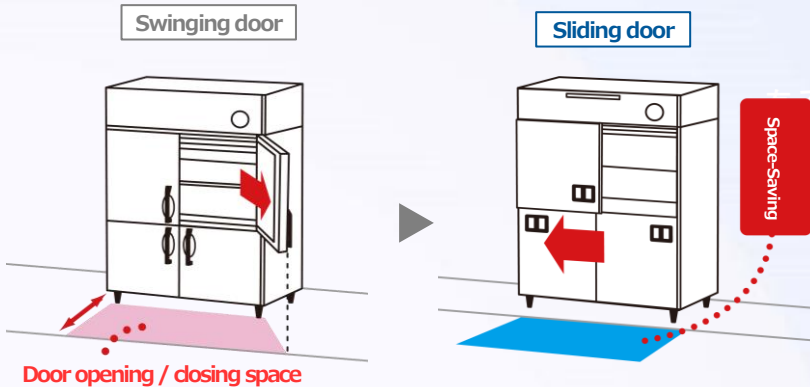
※According to the United Nations Environment Programme (UNEP) OzonAction Kigali Fact Sheet 3



Effective use of working space

Reducing working space by about 30% compared to swinging door.
(width 1200mm model)

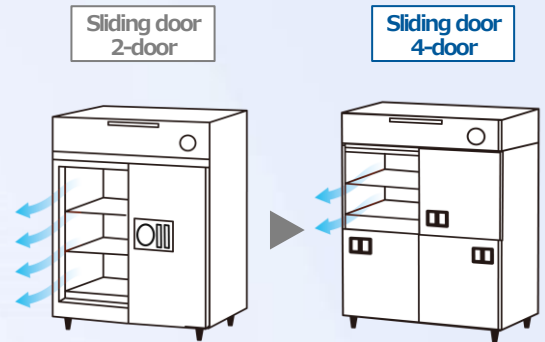
Also, since no space is needed to open / close the door, the sliding door can be opened / closed in narrow aisles without obstructing walkways.



Advantage of 4-door

Reducing the cooling air leakage
(Compared to 2-door)

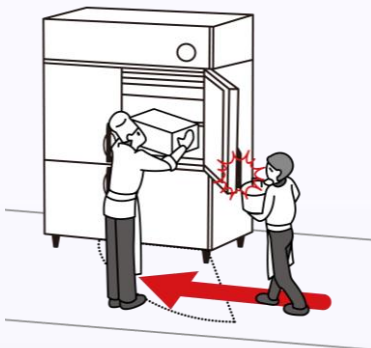
Door can be opened / closed with light touch.



Improving work flow line

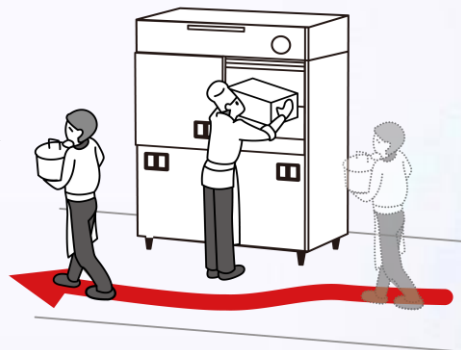
Swinging door

When door is opened, people cannot pass through.



Sliding door

Without blocking a aisles by door, improved work flow line!



Easy removal air filter at the front

Air filter at the front can be easy to remove and improve of quality of service.



Specification



LNXA-1291CD-SD

[Outside Dimensions]	W1200×D874×H1960mm
[Power Supply]	100V · 1φ 50/60Hz
[Effective Capacity]	1093L
[Refrigerant]	R600a



DAIWA INDUSTRIES LTD.